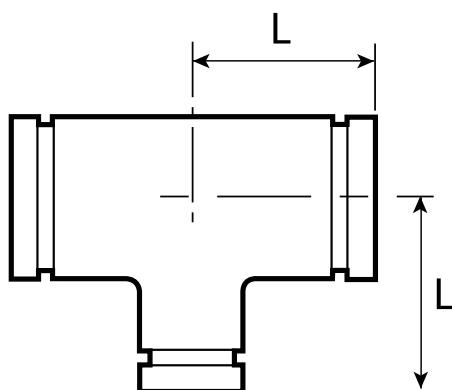


TEE REDUCCIÓN RANURADA



Colores Referenciales

- ◆ Material: Hierro Dúctil A536
- ◆ Sistema tipo Victaulic
- ◆ Presión hasta 500 PSI



* Fotos y medidas referenciales.

Tamaño Nominal mm / in	Tubo O.D mm / in	Presión de Trabajo PSI / MPa	Dimensiones L mm / in
50X25 2X1	60.3X33.7 2.375X1.315	500 3.45	82.5 3.25
50x40 2x1½	60.3x48.3 2.375x1.900	500 3.45	82.5 3.25
65x40 2½x1½	73.0x48.3 2.875x1.900	500 3.45	101.5 4.00
65x50 2½x2	73.0x60.3 3.000x2.375	500 3.45	101.5 4.00
65x32 2½x1¼	76.1x42.4 3.000x1.660	500 3.45	101.5 4.00
65x40 2½x1½	76.1x48.3 3.000x1.900	500 3.45	101.5 4.00
65x50 2½x2	76.1x60.3 3.000x2.375	500 3.45	95 3.75
80X32 3X1¼	88.9X42.4 3.500X1.660	500 3.45	108 4.25
80X40 3X1½	88.9X48.3 3.500X1.900	500 3.45	108 4.25
80x50 3x2	88.9x60.3 3.500x2.375	500 3.45	108 4.25
80X65 3X2½	88.9X73.0 3.500X2.875	500 3.45	108 4.25
80x65 3x2½	88.9x76.1 3.500x3.000	500 3.45	108 4.25
100x50 4x2	108.0x60.3 4.250x2.375	500 3.45	127 5.00
100X65 4X2½	108.0X73.0 4.250X2.875	500 3.45	127 5.00
100x80 4x3	108.0x88.9 4.250x3.500	500 3.45	127 5.00
100x25 4x1	114.3x33.7 4.500x1.315	500 3.45	127 5.00
100X40 4X1½	114.3X48.3 4.500X1.900	500 3.45	127 5.00
100x50 4x2	114.3x60.3 4.500x2.375	500 3.45	127 5.00
100X65 4X2½	114.3X73.0 4.500X2.875	500 3.45	127 5.00
100x65 4x2½	114.3x76.1 4.500x3.000	500 3.45	127 5.00
100x80 4x3	114.3x88.9 4.500x3.500	500 3.45	127 5.00

TEE REDUCCIÓN RANURADA



Tamaño Nominal mm / in	Tubo O.D mm / in	Presión de Trabajo PSI / MPa	Tamaño L mm / in
125X50 5X2	133.0X60.3 5.250X2.375	500 3.45	140 5.50
125X65 5X2½	133.0X76.1 5.250X3.000	500 3.45	140 5.50
125X100 5X4	133.0X108.0 5.250X4.250	500 3.45	140 5.50
125X100 5X4	133.0X114.3 5.250X4.500	500 3.45	140 5.50
125x40 5x1½	139.7x48.3 5.500x1.900	500 3.45	140 5.50
125x50 5x2	139.7x60.3 5.500x2.375	500 3.45	140 5.50
125x65 5x2½	139.7x76.1 5.500x3.000	500 3.45	140 5.50
125x80 5x3	139.7x88.9 5.500x3.500	500 3.45	140 5.50
125x100 5x4	139.7x114.3 5.500x4.500	500 3.45	140 5.50
125x50 5x2	141.3x60.3 5.563x2.375	500 3.45	140 5.50
150X60 6X2	159.0X60.3 6.250X2.375	500 3.45	165 6.50
150X65 6X2½	159.0X76.1 6.250X3.000	500 3.45	165 6.50
150X80 6X3	159.0X88.9 6.250X3.500	500 3.45	165 6.50
150X100 6X4	159.0X108.0 6.250X4.250	500 3.45	165 6.50
150x100 6x4	159.0x114.3 6.250x4.500	500 3.45	165 6.50
150x125 6x5	159.0x133.0 6.250x5.250	500 3.45	165 6.50
150x50 6x2	165.1x60.3 6.500x2.375	500 3.45	165 6.50
150x65 6x2½	165.1x76.1 6.500x3.000	500 3.45	165 6.50
150x80 6x3	165.1x88.9 6.500x3.500	500 3.45	165 6.50
150x100 6x4	165.1x114.3 6.500x4.500	500 3.45	165 6.50
150x125 6x5	165.1x133.0 6.500x5.250	500 3.45	165 6.50
150x125 6x5	165.1x139.7 6.500x5.500	500 3.45	165 6.50
150X50 6X2	168.3X60.3 6.625X2.375	500 3.45	165 6.50

Tamaño Nominal mm / in	Tubo O.D mm / in	Presión de Trabajo PSI / MPa	Tamaño L mm / in
150x65 6x2½	168.3x73.0 6.625x2.875	500 3.45	165 6.50
150x65 6x2½	168.3x76.1 6.625x3.000	500 3.45	165 6.50
150X80 6X3	168.3X88.9 6.625X3.500	500 3.45	165 6.50
150x100 6x4	168.3x114.3 6.625x4.500	500 3.45	165 6.50
150x125 6x5	168.3x141.3 6.625x5.563	500 3.45	165 6.50
200x150 8x6	216.3x165.1 8.516x6.500	500 3.45	197 7.75
200x50 8x2	219.1x60.3 8.625x2.375	500 3.45	197 7.75
200x65 8x2½	219.1x76.1 8.625x3.000	500 3.45	197 7.75
200x80 8x3	219.1x88.9 8.625x3.500	500 3.45	197 7.75
200x100 8x4	219.1x108.0 8.625x4.250	500 3.45	197 7.75
200x100 8x4	219.1x114.3 8.625x4.500	500 3.45	197 7.75
200x125 8x5	219.1x133.0 8.625x5.250	500 3.45	197 7.75
200x125 8x5	219.1x139.7 8.625x5.500	500 3.45	197 7.75
200x150 8x6	219.1x159.0 8.625x6.250	500 3.45	197 7.75
200x150 8x6	219.1x165.1 8.625x6.500	500 3.45	197 7.75
200x150 8x6	219.1x168.3 8.625x6.625	500 3.45	197 7.75
250x150 10x6	273.0x159.0 10.750x6.250	500 3.45	229 9.00
250x150 10x6	273.0x165.1 10.750x6.500	500 3.45	229 9.00
250x200 10x8	273.0x219.1 10.750x8.625	500 3.45	229 9.00
300x150 12x6	323.9x165.1 12.750x6.500	500 3.45	254 10
300x200 12x8	323.9x219.1 12.750x8.625	500 3.45	254 10
300x250 12x10	323.9x273.0 12.750x10.750	500 3.45	254 10

* Fotos y medidas referenciales.