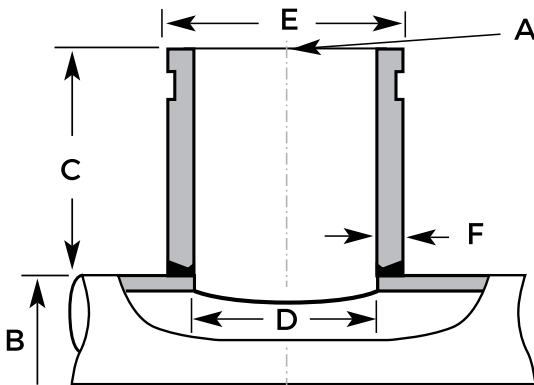


SALIDA SOLDABLE RANURADA



Colores Referenciales

- ◆ Material: Acero A53
- ◆ Presión hasta 300 PSI
- ◆ SCH 40



Día. Nominal in. (mm)	Tubo O.D in. (mm)	Largo de Salida in. (mm)	Día. Int. in. (mm)	Día. Ext. in. (mm)	Espesor de Pared in. (mm)
A	B	C	D	E	F
1" (25)	1 1/4" - 1 1/2" (32 - 40)	3" (80)	1.049 (26.6)	1.315 (33.4)	0.133 (3.4)
	1 1/2" - 2" (40 - 50)	3" (80)	1.049 (26.6)	1.315 (33.4)	0.133 (3.4)
	2" - 2 1/2" (50 - 65)	3" (80)	1.049 (26.6)	1.315 (33.4)	0.133 (3.4)
	2 1/2" - 4" (65 - 100)	3" (80)	1.049 (26.6)	1.315 (33.4)	0.133 (3.4)
	5" - 8" (125 - 200)	3" (80)	1.049 (26.6)	1.315 (33.4)	0.133 (3.4)
1 1/4" (32)	1 1/4" (32)	3" (80)	1.368 (34.7)	1.660 (42.2)	0.140 (3.6)
	1 1/2" (40)	3" (80)	1.368 (34.7)	1.660 (42.2)	0.140 (3.6)
	2" - 2 1/2" (50 - 65)	3" (80)	1.368 (34.7)	1.660 (42.2)	0.140 (3.6)
	3" - 4" (80 - 100)	3" (80)	1.368 (34.7)	1.660 (42.2)	0.140 (3.6)
	5" - 8" (125 - 200)	3" (80)	1.368 (34.7)	1.660 (42.2)	0.140 (3.6)
1 1/2" (40)	1 1/2" (40)	3" (80)	1.610 (40.9)	1.900 (48.3)	0.145 (3.7)
	2" (50)	3" (80)	1.610 (40.9)	1.900 (48.3)	0.145 (3.7)
	2 1/2" (65)	3" (80)	1.610 (40.9)	1.900 (48.3)	0.145 (3.7)
	3" - 4" (80 - 100)	3" (80)	1.610 (40.9)	1.900 (48.3)	0.145 (3.7)
	5" - 8" (125 - 200)	3" (80)	1.610 (40.9)	1.900 (48.3)	0.145 (3.7)
2" (50)	2" (50)	3" (80)	2.067 (52.5)	2.375 (60.3)	0.154 (3.9)
	2 1/2" (65)	3" (80)	2.067 (52.5)	2.375 (60.3)	0.154 (3.9)
	3" (80)	3" (80)	2.067 (52.5)	2.375 (60.3)	0.154 (3.9)
	4" (100)	3" (80)	2.067 (52.5)	2.375 (60.3)	0.154 (3.9)
	5" (125)	3" (80)	2.067 (52.5)	2.375 (60.3)	0.154 (3.9)
	6" (150)	3" (80)	2.067 (52.5)	2.375 (60.3)	0.154 (3.9)
	8" (200)	3" (80)	2.067 (52.5)	2.375 (60.3)	0.154 (3.9)
2 1/2" (65)	2 1/2" (65)	3" (80)	2.469 (62.7)	2.875 (76.2)	0.203 (5.0)
	3" (80)	3" (80)	2.469 (62.7)	2.875 (76.2)	0.203 (5.0)
	4" (100)	3" (80)	2.469 (62.7)	2.875 (76.2)	0.203 (5.0)
	5" (125)	3" (80)	2.469 (62.7)	2.875 (76.2)	0.203 (5.0)
	6" (150)	3" (80)	2.469 (62.7)	2.875 (76.2)	0.203 (5.0)
	8" (200)	3" (80)	2.469 (62.7)	2.875 (76.2)	0.203 (5.0)

* Fotos y medidas referenciales.

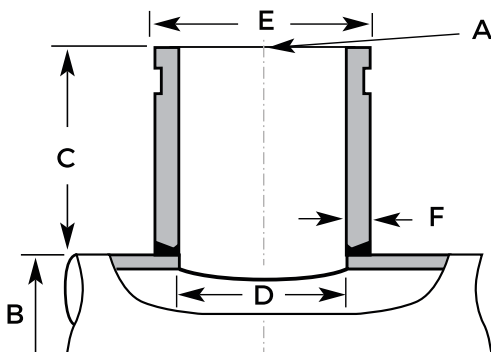
SALIDA SOLDABLE RANURADA



Colores Referenciales

Día. Nominal in. (mm)	Tubo O.D in. (mm)	Largo de Salida in. (mm)	Diá. Int. in. (mm)	Diá. Ext. in. (mm)	Espesor de Pared in. (mm)
A	B	C	D	E	F
3" (80)	3" (80)	3" (80)	3.068 (78.0)	3.500 (88.0)	0.216 (3.4)
	3 1/2" (85)	3" (80)	3.068 (78.0)	3.500 (88.0)	0.216 (3.4)
	4" (100)	3" (80)	3.068 (78.0)	3.500 (88.0)	0.216 (3.4)
	5" (125)	3" (80)	3.068 (78.0)	3.500 (88.0)	0.216 (3.4)
	6" (150)	3" (80)	3.068 (78.0)	3.500 (88.0)	0.216 (3.4)
	8" (200)	3" (80)	3.068 (78.0)	3.500 (88.0)	0.216 (3.4)
4" (100)	4" (100)	4" (100)	4.026 (102.0)	4.500 (114.0)	0.237 (6.0)
	5" (125)	4" (100)	4.026 (102.0)	4.500 (114.0)	0.237 (6.0)
	6" (150)	4" (100)	4.026 (102.0)	4.500 (114.0)	0.237 (6.0)
	8" (200)	4" (100)	4.026 (102.0)	4.500 (114.0)	0.237 (6.0)
5" (125)	5" (125)	4" (100)	5.047 (128.2)	1.900 (48.3)	0.145 (3.7)
	6" (150)	4" (100)	-	-	-
	8" (200)	4" (100)	-	-	-
6" (150)	6" (150)	4" (100)	6.065 (155.0)	6.625 (168.3)	0.280 (7.1)
	8" (200)	4" (100)	6.065 (155.0)	6.625 (168.3)	0.280 (7.1)
8" (200)	8" (200)	4" (100)	7.981 (203.0)	8.625 (213.0)	0.322 (8.0)

- ◆ Material: Acero A53
- ◆ Presión hasta 300 PSI
- ◆ SCH 40



* Fotos y medidas referenciales.