

REDUCCIÓN BUSHING

Clase 150

Material: Fierro Maleable ASTM A197/A197M
y con Galvanizado (ASTM A153)/HOT-DIP

Estándar Americano: Clase 150

Dimensiones: ASME B16.3, B16.14

Dimensiones de Unión: ASME B16.39

Roscado: NPT ASME B1.20.1

Usos:

Fierro Maleable: Aceites, petróleos, gases (GLP/ GNV) y vapor. No recomendado para agua y químicos o productos similares.

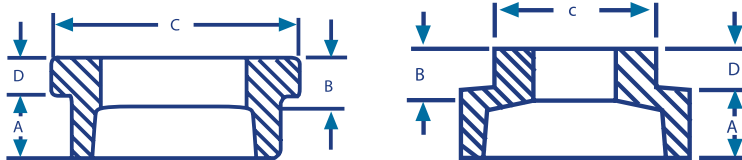
Galvanizado: Agua, fluidos industriales gases (GLP/GNV), aire y sistemas contra incendio. No recomendado para químicos y fluidos con temperatura.



NEGRO



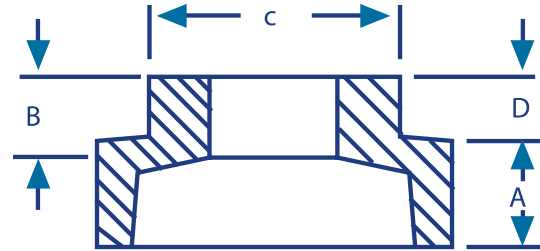
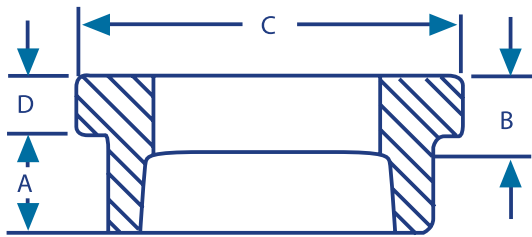
GALVANIZADO



Medida	A	B	C	D
3/8 x 1/8"	0.480	0.250	0.680	0.160
3/8 x 1/4"	0.480	0.400	0.680	0.160
1/2 x 1/4"	0.560	0.320	0.870	0.190
1/2 x 3/8"	0.560	0.410	0.870	0.190
3/4 x 1/4"	0.630	0.320	1.150	0.220
3/4 x 3/8"	0.630	0.360	1.150	0.220
3/4 x 1/2"	0.630	0.530	1.150	0.220
1 x 1/4"	0.750	0.320	1.120	0.300
1 x 3/8"	0.750	0.360	1.120	0.300
1 x 1/2"	0.750	0.430	1.420	0.250
1 x 3/4"	0.750	0.500	1.420	0.250
1 1/4 x 1/2"	0.800	0.430	1.340	0.340
1 1/4 x 3/4"	0.800	0.500	1.760	0.280
1 1/4 x 1"	0.800	0.580	1.760	0.280

REDUCCIÓN BUSHING

Clase 150



Medida	A	B	C	D
1 1/2 x 1/2"	0.830	0.430	1.340	0.370
1 1/2 x 3/4"	0.830	0.500	1.630	0.370
1 1/2 x 1"	0.830	0.580	2.000	0.310
1 1/2 x 1 1/4"	0.830	0.710	2.000	0.310
2 x 1/2"	0.880	0.430	1.340	0.410
2 x 3/4"	0.880	0.500	1.630	0.410
2 x 1"	0.880	0.580	1.950	0.410
2 x 1 1/4"	0.880	0.670	2.480	0.340
2 x 1 1/2"	0.880	0.700	2.480	0.340
2 1/2 x 1"	1.070	0.580	1.950	0.440
2 1/2 x 1 1/4"	1.070	0.670	2.390	0.440
2 1/2 x 1 1/2"	1.070	0.700	2.680	0.440
2 1/2 x 2"	1.070	0.750	2.980	0.370
3 x 1"	1.130	0.580	1.950	0.480
3 x 1 1/4"	1.130	0.670	2.390	0.480
3 x 1 1/2"	1.130	0.700	2.680	0.480
3 x 2"	1.130	0.750	3.280	0.480
3 x 2 1/2"	1.130	0.920	3.860	0.400
4 x 1"	1.220	0.580	1.950	0.600
4 x 1 1/4"	1.220	0.67	2.390	0.600
4 x 1 1/2"	1.220	0.700	2.680	0.600
4 x 2"	1.220	0.750	3.280	0.600
4 x 2 1/2"	1.220	0.920	3.860	0.600
4 x 3"	1.220	0.980	4.620	0.500
6 x 2"	1.400	0.750	3.280	0.750
6 x 2 1/2"	1.400	0.920	3.860	0.750
6 x 3"	1.400	0.980	4.620	0.750
6 x 4"	1.400	1.080	5.790	0.750