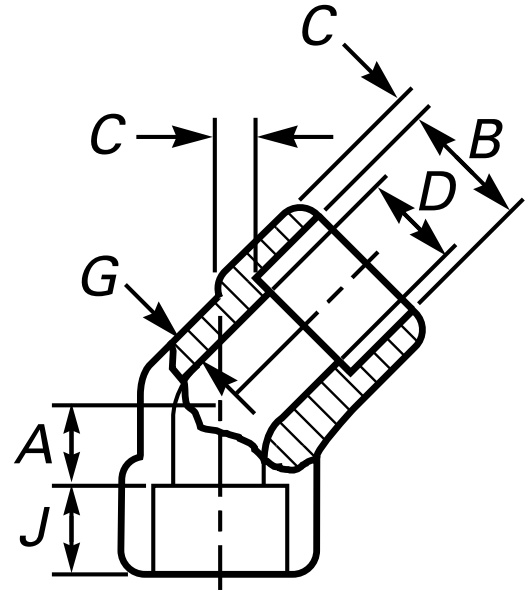




\* Reference photo



**Design:** ANSI B16.11  
**Socket Welding**  
**Material:** Forged Steel ASTM A105  
**Class:** 3000  
**Correlation:** Schedule 160

Units: Millimeters (mm)

Nominal Pipe Size		Socket Bore Diameter, B [Note 1]	Bore Diameter of Fittings, D [Note 1]	Socket Wall Thickness, C		Min. Body Wall, G	Min. Depth of Socket, J	Center to Bottom of Socket, A	Tolerances +/- A	Approx. Weight kg
inch	mm			Avg.	Min.					
1/8"	6	11.2 10.8	7.6 6.1	3.18	3.18	2.41	9.5	8.0	1.0	0.10
1/4"	8	14.6 14.2	10.0 8.5	3.78	3.30	3.02	9.5	8.0	1.0	0.09
3/8"	10	18.0 17.6	13.3 11.8	4.01	3.50	3.20	9.5	8.0	1.5	0.10
1/2"	15	22.2 21.8	16.6 15.0	4.67	4.09	3.73	9.5	11.0	1.5	0.19
3/4"	20	27.6 27.2	21.7 20.2	4.90	4.27	3.91	12.5	13.0	1.5	0.32
1"	25	34.3 33.9	27.4 25.9	5.69	4.98	4.55	12.5	14.0	2.0	0.43
1 1/4"	32	43.1 42.7	35.8 34.3	6.07	5.28	4.85	12.5	17.5	2.0	0.63
1 1/2"	40	49.2 48.8	41.6 40.1	6.35	5.54	5.08	12.5	20.5	2.0	0.76
2"	50	61.7 61.2	53.3 51.7	6.93	6.04	5.54	16.0	25.5	2.0	1.34
2 1/2"	65	74.4 73.9	64.2 61.2	8.76	7.67	7.01	16.0	28.5	2.5	3.52
3"	80	90.3 89.9	79.4 76.4	9.52	8.30	7.62	16.0	32.0	2.5	3.88
4"	100	115.7 115.2	103.8 100.7	10.69	9.35	8.56	16.0	41.0	2.5	10.91

[Note 1] Upper and lower values for each size are the respective maximum and minimum dimensions.

**\* Note : Dimensions, design and materials are subject to change without notice.**

MAC EDITIONS - MMXXIV

