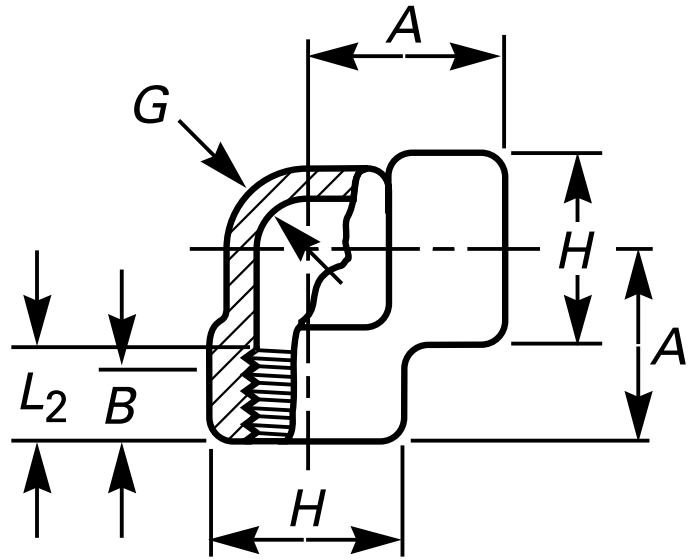




\* Reference photo



**Design:** ANSI B16.11  
**Threaded:** NPT ANSI B1.20.1  
**Material:** Forged Steel ASTM A105  
**Class:** 3000  
**Correlation:** Schedule 160

Units: Millimeters (mm)

Nominal Pipe Size		Center-to-End, A	Outside Diameter of Band, H	Min. Wall Thickness, G	Min. Length of Thread		Approx. Weight kg
inch	mm				B	L2	
1/8"	6	21	22	3.18	6.4	6.7	0.12
1/4"	8	25	25	3.30	8.1	10.2	0.16
3/8"	10	28	33	3.51	9.1	10.4	0.26
1/2"	15	33	38	4.09	10.9	13.6	0.44
3/4"	20	38	46	4.32	12.7	13.9	0.64
1"	25	44	56	4.98	14.7	17.3	1.04
1 1/4"	32	51	62	5.28	17.0	18.0	1.26
1 1/2"	40	60	75	5.56	17.8	18.4	2.46
2"	50	64	84	7.14	19.0	19.2	2.66
2 1/2"	65	83	102	7.65	23.6	28.9	5.00
3"	80	95	121	8.84	25.9	30.5	7.94
4"	100	114	152	11.18	27.7	33.0	15.06

\* Note : Dimensions, design and materials are subject to change without notice.

MAC EDITIONS - MMXXIV

