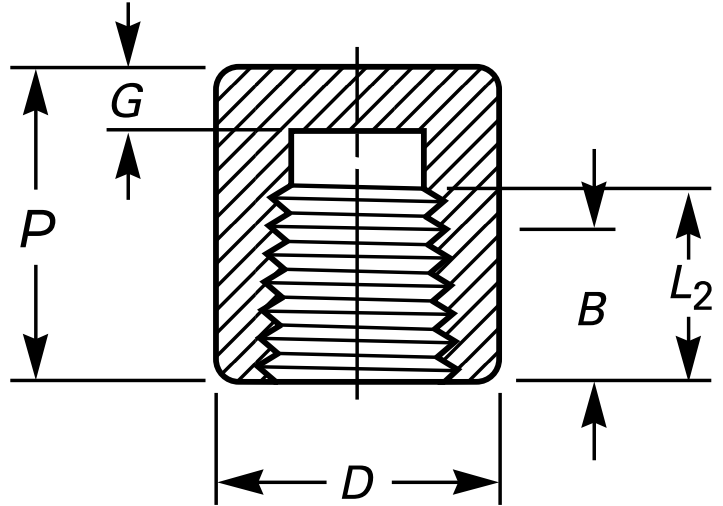




* Reference photo

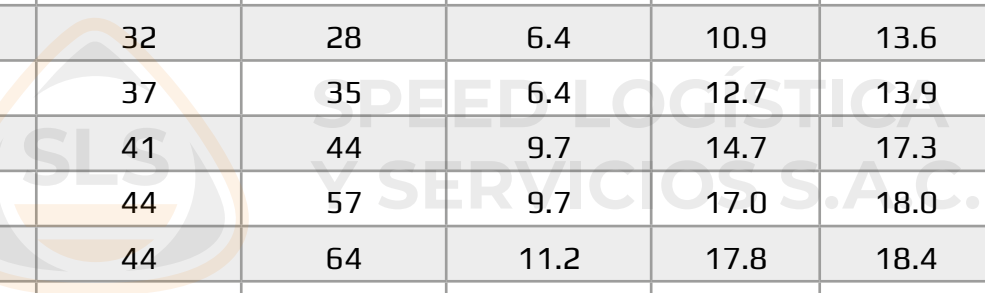


Design: ANSI B16.11
Threaded: NPT ANSI B1.20.1
Material: Forged Steel ASTM A105
Class: 3000
Correlation: Schedule 160

Units: Millimeters (mm)

Nominal Pipe Size		End-to-End, P	Outside Diameter, D	Min. End Wall Thickness, G	Min. Length of Thread		Approx. Weight kg
inch	mm				B	L2	
1/8"	6	19	16	4.8	6.4	6.7	0.05
1/4"	8	25	19	4.8	8.1	10.2	0.04
3/8"	10	25	22	4.8	9.1	10.4	0.05
1/2"	15	32	28	6.4	10.9	13.6	0.11
3/4"	20	37	35	6.4	12.7	13.9	0.17
1"	25	41	44	9.7	14.7	17.3	0.34
1 1/4"	32	44	57	9.7	17.0	18.0	0.61
1 1/2"	40	44	64	11.2	17.8	18.4	0.74
2"	50	48	76	12.7	19.0	19.2	1.09
2 1/2"	65	60	92	15.7	23.6	28.9	2.02
3"	80	65	108	19.0	25.9	30.5	3.24
4"	100	68	140	22.4	27.7	33.0	5.63

MAC EDITIONS - MMXXIV



* Note : Dimensions, design and materials are subject to change without notice.