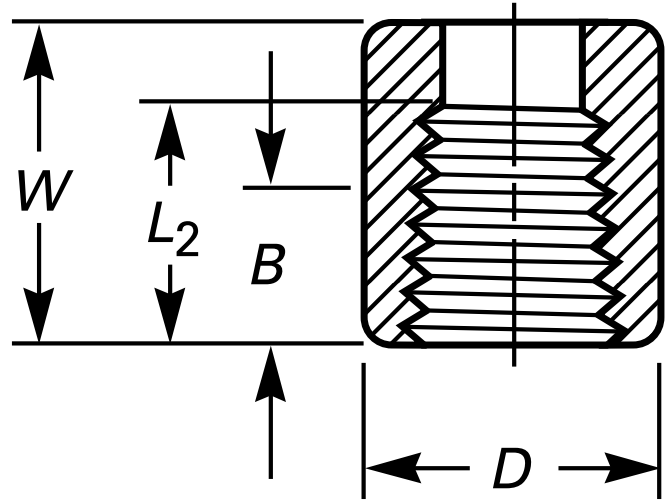




* Reference photo

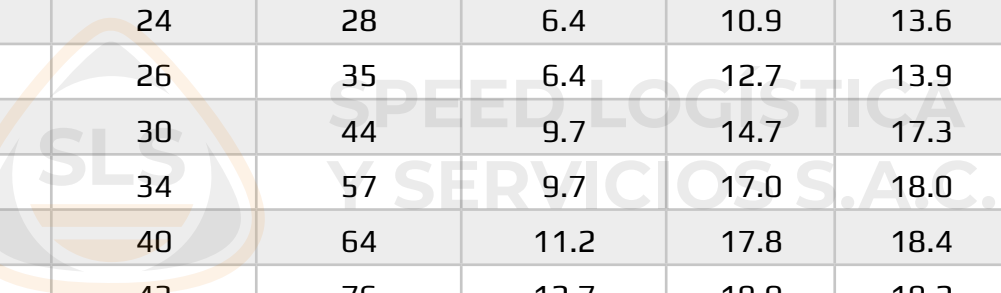


Design: ANSI B16.11
Threaded: NPT ANSI B1.20.1
Material: Forged Steel ASTM A105
Class: 3000
Correlation: Schedule 160

Units: Millimeters (mm)

Nominal Pipe Size		End-to-End, W	Outside Diameter, D	Min. Wall Thickness	Min. Length of Thread		Approx. Weight
inch	mm				B	L2	
1/8"	6	16	16	4.8	6.4	6.7	0.03
1/4"	8	18	19	4.8	8.1	10.2	0.02
3/8"	10	19	22	4.8	9.1	10.4	0.03
1/2"	15	24	28	6.4	10.9	13.6	0.06
3/4"	20	26	35	6.4	12.7	13.9	0.10
1"	25	30	44	9.7	14.7	17.3	0.19
1 1/4"	32	34	57	9.7	17.0	18.0	0.36
1 1/2"	40	40	64	11.2	17.8	18.4	0.51
2"	50	43	76	12.7	19.0	19.2	0.69
2 1/2"	65	46	92	15.7	23.6	28.9	1.06
3"	80	54	108	19.0	25.9	30.5	1.48
4"	100	61	140	22.4	27.7	33.0	2.94

MAC EDITIONS - MMXXIV



* Note : Dimensions, design and materials are subject to change without notice.

