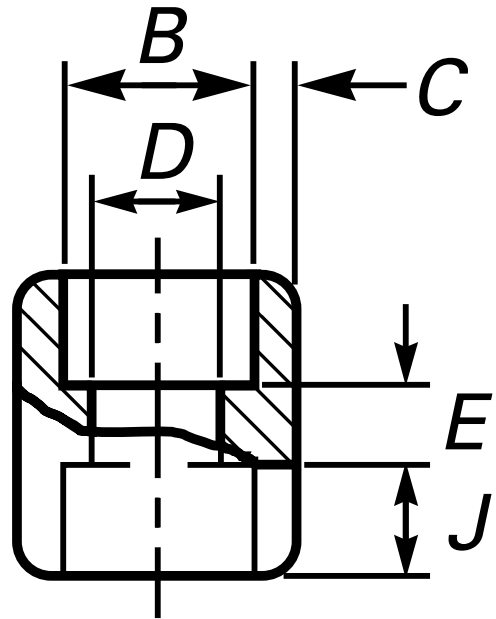




\* Reference photo



**Design:** ANSI B16.11  
**Socket Welding**  
**Material:** Forged Steel ASTM A105  
**Class:** 3000  
**Correlation:** Schedule 80

Units: Millimeters (mm)

Nominal Pipe Size		Socket Bore Diameter, B [Note 1]	Bore Diameter of Fittings, D [Note 1]	Socket Wall Thickness, C		Min. Depth of Socket, J	Laying Lengths, E	Tolerances +- E	Approx. Weight kg
inch	mm			Avg.	Min.				
1/8"	6	11.2	7.6	3.18	3.18	9.5	6.5	1.5	0.04
		10.8	6.1						
1/4"	8	14.6	10.0	3.78	3.30	9.5	6.5	1.5	0.05
		14.2	8.5						
3/8"	10	18.0	13.3	4.01	3.50	9.5	6.5	3.0	0.07
		17.6	11.8						
1/2"	15	22.2	16.6	4.67	4.09	9.5	9.5	3.0	0.11
		21.8	15.0						
3/4"	20	27.6	21.7	4.90	4.27	12.5	9.5	3.0	0.18
		27.2	20.2						
1"	25	34.3	27.4	5.69	4.98	12.5	12.5	4.0	0.26
		33.9	25.9						
1 1/4"	32	43.1	35.8	6.07	5.28	12.5	12.5	4.0	0.41
		42.7	34.3						
1 1/2"	40	49.2	41.6	6.35	5.54	12.5	12.5	4.0	0.47
		48.8	40.1						
2"	50	61.7	53.3	6.93	6.04	16.0	19.0	4.0	0.81
		61.2	51.7						
2 1/2"	65	74.4	64.2	8.76	7.67	16.0	19.0	5.0	1.10
		73.9	61.2						
3"	80	90.3	79.4	9.52	8.30	16.0	19.0	5.0	1.84
		89.9	76.4						
4"	100	115.7	103.8	10.69	9.35	16.0	19.0	5.0	2.60
		115.2	100.7						

[Note 1] Upper and lower values for each size are the respective maximum and minimum dimensions.

\* Note : Dimensions, design and materials are subject to change without notice.

MAC EDITIONS - MMXXIV

