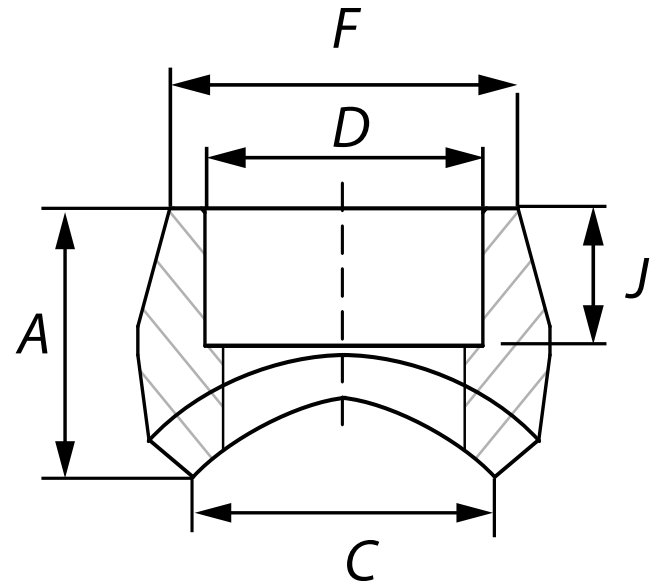




* Reference photo



Design: MSS-SP-97-2001
Socket Weld
Material: Forged Steel ASTM A105
Class: 3000
Correlation:
 Schedule 160

Units: Millimeters (mm)

Size		A	C	D	F	J (Min.)	Approx. Weight
inch	mm						kg
1/8"	6	19.0	13.7	10.9	17.3	10.0	0.05
1/4"	8	19.0	13.7	14.4	22.0	10.0	0.05
3/8"	10	21.0	17.1	17.8	25.8	10.0	0.09
1/2"	15	25.0	21.3	22.0	31.3	10.0	0.14
3/4"	20	27.0	26.7	27.3	37.1	13.0	0.16
1"	25	33.0	33.4	34.1	45.5	13.0	0.27
1 1/4"	32	33.0	42.2	42.8	54.9	13.0	0.39
1 1/2"	40	35.0	48.3	48.9	61.6	13.0	0.45
2"	50	38.0	60.3	61.4	75.3	16.0	0.73
2 1/2"	65	46.0	73.0	74.2	91.7	16.0	1.25
3"	75	51.0	88.9	90.1	109.1	16.0	1.72
3 1/2"	88	54.0	101.6	-	-	-	1.95
4"	100	57.0	114.3	115.8	137.2	19.0	3.29
5"	125	66.7	141.29	-	-	-	5.44
6"	150	69.85	169.86	-	-	-	6.58

* Note : Dimensions, design and materials are subject to change without notice.

MAC EDITIONS - MMXXIV

