



# COPLA NPT 6000 PSIG

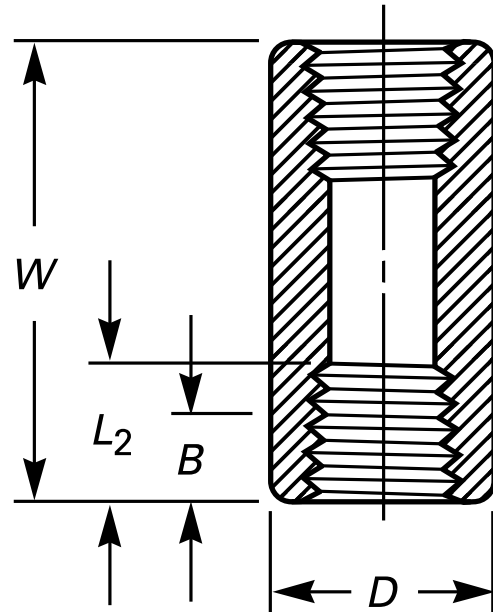
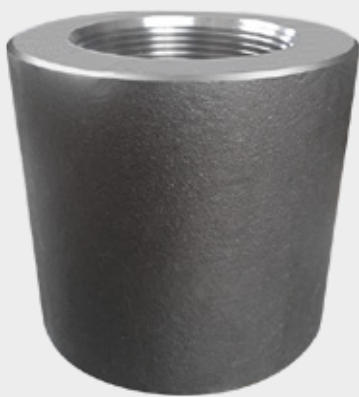
## Normas de Diseño:

Roscado NPT ANSI B1.20.1

ASME B16.11

**Material:** Acero Forjado A105

Presión de Trabajo: 6000 PSIG



Unidad: Milímetros (mm)

Medida		Extremo a Extremo W	Diámetro Exterior D	Mínimo Espesor de Pared	Largo de Roscado min.	
pulg	mm				B	L2
1/8"	6	32	22	4.8	6.4	6.7
1/4"	8	35	25	4.8	8.1	10.2
3/8"	10	38	32	4.8	9.1	10.4
1/2"	15	48	38	6.4	10.9	13.6
3/4"	20	51	44	6.4	12.7	13.9
1"	25	60	57	9.7	14.7	17.3
1 1/4"	32	67	64	9.7	17.0	18.0
1 1/2"	40	79	76	11.2	17.8	18.4
2"	50	86	92	12.7	19.0	19.2
2 1/2"	65	92	108	15.7	23.6	28.9
3"	80	108	127	19.0	25.9	30.5
4"	100	121	159	22.4	27.7	33.0