

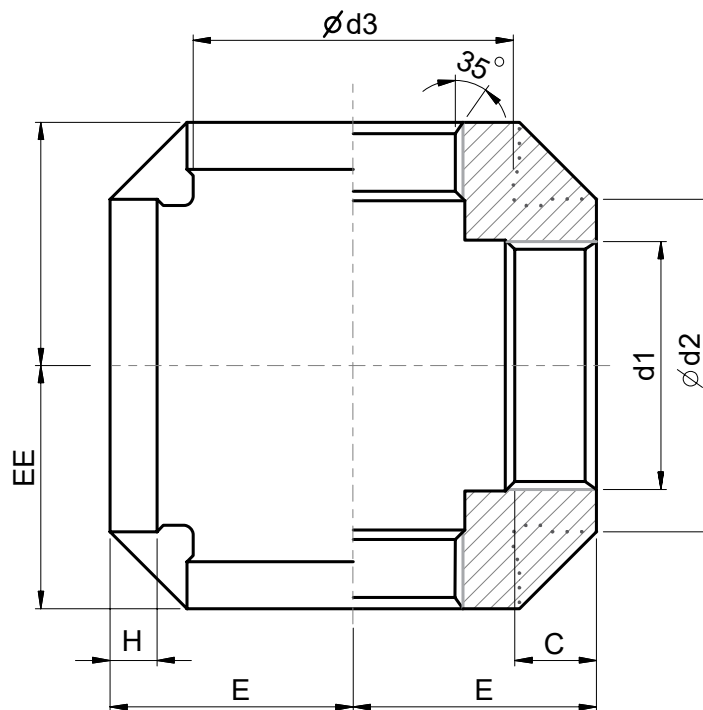
**Normas de Diseño:**

Roscado NPT ANSI B1.20.1

**Material:** Acero Inoxidable ASTM A351  
CF8 (304) y CF8M (316)

Presión de Trabajo:

300 PSI @ -28°C a 38°C / 150 SWP


**Unidad: Pulgadas (inch)**

| Medida | d1     | d2   | d3   | C    | E    | H    | Peso (Kg) |
|--------|--------|------|------|------|------|------|-----------|
| 1/8"   | 1/8"   | 0.63 | 0.55 | 0.24 | 0.69 | 0.24 | 0.17      |
| 1/4"   | 1/4"   | 0.79 | 0.71 | 0.37 | 0.75 | 0.28 | 0.14      |
| 3/8"   | 3/8"   | 0.98 | 0.91 | 0.38 | 0.91 | 0.28 | 0.22      |
| 1/2"   | 1/2"   | 1.18 | 1.10 | 0.39 | 1.14 | 0.28 | 0.39      |
| 3/4"   | 3/4"   | 1.42 | 1.34 | 0.43 | 1.28 | 0.35 | 0.54      |
| 1"     | 1"     | 1.77 | 1.65 | 0.55 | 1.48 | 0.39 | 0.68      |
| 1 1/4" | 1 1/4" | 2.09 | 1.97 | 0.71 | 1.73 | 0.43 | 0.92      |
| 1 1/2" | 1 1/2" | 2.36 | 2.20 | 0.71 | 1.89 | 0.47 | 1.35      |
| 2"     | 2"     | 2.87 | 2.76 | 0.71 | 2.32 | 0.51 | 1.95      |
| 2 1/2" | 2 1/2" | 3.54 | 3.39 | 0.87 | 2.68 | 0.55 | 3.42      |
| 3"     | 3"     | 4.17 | 4.02 | 0.98 | 3.07 | 0.59 | 4.45      |
| 4"     | 4"     | 5.20 | 5.04 | 1.02 | 3.82 | 0.63 | 8.07      |