



CAMLOCK PART E

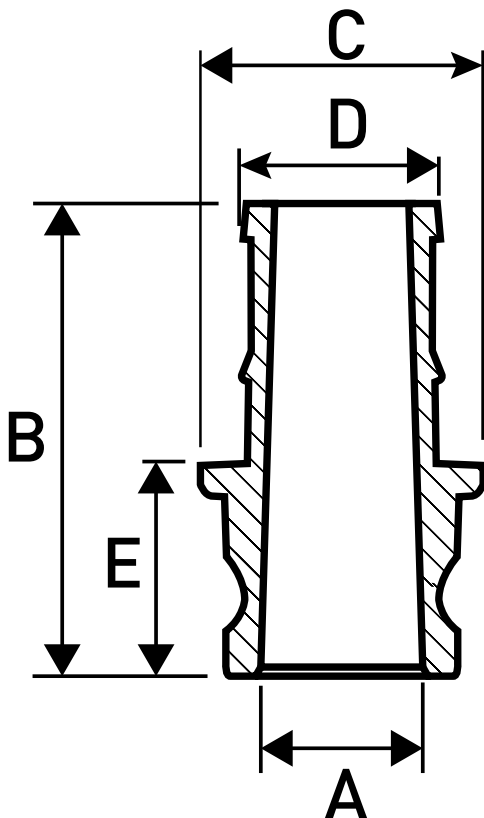
ADAPTER WITH HOSE TAIL

Design Norm: Federal Mil A-A-59326A

Material: Stainless Steel 304 y 316

Working Pressure:

1/2" 150 PSI, 3/4" - 2" 250 PSI, 2 1/2" 225 PSI,
3" 200 PSI, 4"-6" 100 PSI



Size		A (mm)	B (mm)	C (mm)	D (mm)	E (mm)	Weight (kg)
inch	mm						
1/2"	13	14	64	29	15	29	0.09
3/4"	19	20	84	35	21	34	0.15
1"	25	25	93	38	27	37	0.23
1 1/4"	32	28	104	49	34	46	0.42
1 1/2"	40	36	110	58	40	49	0.64
2"	50	45	128	76	53	57	0.90
2 1/2"	65	55	135	79	66	57	1.25
3"	75	72	160	98	78	58	1.77
4"	100	96	168	122	102	60	2.74
5"	125	120	193	162	126	71	4.67
6"	150	143	243	178	152	76	6.26