



\* Reference photo

**Material:** ASTM A403 304L  
**Design:** ASME / ANSI B16.9  
**Ends:** Butt Welded  
**Schedule:** SCH 10S

### TENSILE REQUIREMENTS

MATERIAL	Yield Strength, min, ksi [MPa]	Tensile Strength, min, ksi [MPa]
304L	25 [170]	70 [485]

### PERMITTED VARIATIONS IN WALL THICKNESS

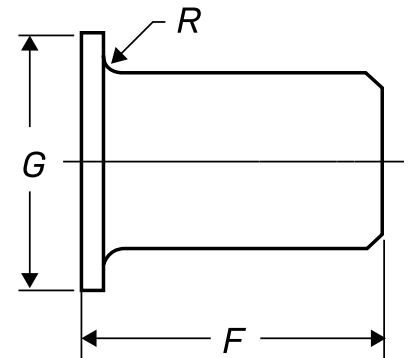
NPS Designator	Tolerance, % from Nominal	
	Over	Under
1/8 to 2 1/2 incl., all t/D ratios	20.0	12.5
3 to 18 incl., t/D up to 5 % incl.	22.5	12.5
3 to 18 incl., t/D > 5%	15.0	12.5

### DIMENSIONS

Nominal Pipe Size (NPS)	Outside Diameter of Barrel, mm (in.)		Short Pattern Length, F, mm (in.)	Radius of Fillet, R, mm (in.)	Diameter of Lap, G, mm (in.)	Nominal Wall Thickness, mm (in.)	Approx. Weight, kg
	Max.	Min					
1/2	22.8 (0.896)	20.5 (0.809)	51 (2.00)	3 (0.12)	35 (1.38)	2.11 (0.083)	0.08
3/4	28.1 (1.106)	25.9 (1.019)	51 (2.00)	3 (0.12)	43 (1.69)	2.11 (0.083)	0.09
1	35.0 (1.376)	32.6 (1.284)	51 (2.00)	3 (0.12)	51 (2.00)	2.77 (0.109)	0.174
1 1/4	43.6 (1.716)	41.4 (1.629)	51 (2.00)	5 (0.19)	64 (2.50)	2.77 (0.109)	0.2
1 1/2	49.9 (1.965)	47.5 (1.869)	51 (2.00)	6 (0.25)	73 (2.88)	2.77 (0.109)	0.25
2	62.4 (2.456)	59.5 (2.344)	64 (2.50)	8 (0.31)	92 (3.62)	2.77 (0.109)	0.38
2 1/2	75.3 (2.966)	72.2 (2.844)	64 (2.50)	8 (0.31)	105 (4.12)	3.05 (0.12)	0.47
3	91.3 (3.596)	88.1 (3.469)	64 (2.50)	10 (0.38)	127 (5.00)	3.05 (0.12)	0.72
3 1/2	104.0 (4.096)	100.8 (3.969)	76 (3.00)	10 (0.38)	140 (5.50)	3.05 (0.12)	-
4	116.7 (4.593)	113.5 (4.469)	76 (3.00)	11 (0.44)	157 (6.19)	3.05 (0.12)	1.1
5	144.3 (5.683)	140.5 (5.532)	76 (3.00)	11 (0.44)	186 (7.31)	3.4 (0.134)	1.6
6	171.3 (6.743)	167.5 (6.594)	89 (3.50)	13 (0.50)	216 (8.50)	3.4 (0.134)	2.2
8	222.1 (8.743)	218.3 (8.594)	102 (4.00)	13 (0.50)	270 (10.62)	3.76 (0.148)	3.5
10	277.2 (10.913)	272.3 (10.719)	127 (5.00)	13 (0.50)	324 (12.75)	4.19 (0.165)	5.5
12	328.0 (12.913)	323.1 (12.719)	152 (6.00)	13 (0.50)	381 (15.00)	4.57 (0.18)	8.1
14	359.9 (14.170)	354.8 (13.969)	152 (6.00)	13 (0.50)	413 (16.25)	4.78 (0.188)	-
16	411.0 (16.180)	405.6 (15.969)	152 (6.00)	13 (0.50)	470 (18.50)	4.78 (0.188)	-

where:

t = Nominal Wall Thickness  
D = Ordered Outside Diameter



Speed Logística y Servicios S.A.C.  
 Importador y distribuidor autorizado de  
 productos HGA  
 para Perú y para su exportación.

\* Conversion equivalents are approximate. Reference weights.

\* Photos and reference data. Reference weights. We accept no liability for incorrect uses or misinterpretations of this data.