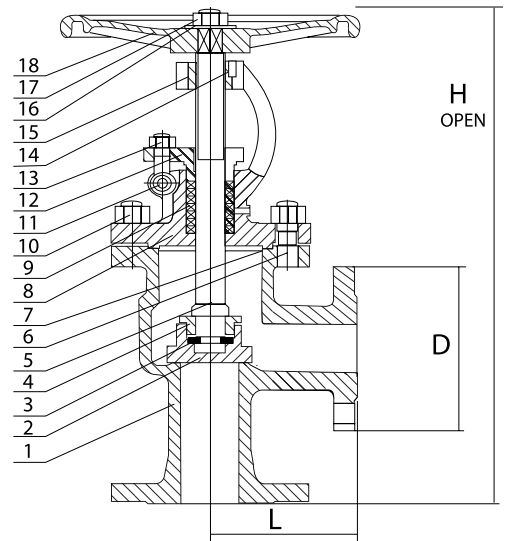




* Reference photo

Body and Bonnet Cast Steel
 ASTM A216 WCB
 Bolted Bonnet. Rising Stem OS&Y.
 Norm Steel Valves: ANSI/ASME B16.34
 Flange dimensions: ANSI B16.5 RF
 Face to Face dimensions: ASME B16.10
 Hydrostatic Testing API 598



Speed Logística y Servicios S.A.C.
 Importador y distribuidor autorizado de
 válvulas REX para Perú y para su exportación.

PRESSURE TEMPERATURE RATINGS (PSI)

Temperature °F/°C	Class 600
(-) 20 °F / (-) 29 °C to (+) 100 °F / (+) 38 °C	1480
200 °F / 93 °C	1350
300 °F / 149 °C	1315
400 °F / 204 °C	1270
500 °F / 260 °C	1200
600 °F / 316 °C	1095
650 °F / 343 °C	1075
700 °F / 371 °C	1065
750 °F / 399 °C	1010
800 °F / 427 °C	825
850 °F / 454 °C	535
900 °F / 482 °C	345

MATERIALS

	PART NAME	MATERIAL
1	BODY	A216 WCB
2	DISK	A216 WCB+ 13% Cr
3	SPLIT COLLAR	A276 420
4	LOCK NUT	A193 GR. B7
5	STEM	SS 410
6	BOLT	A193 B7
7	GASKET	SS304+GRAPHITE
8	BONNET	A216 WCB
9	PACKING	GRAPHITE
10	NUT	A194 2H
11	PIN	A29 1035
12	GLAND FLANGE	A216 WCB
13	NUT	A194 2H
14	SCREW	A29 1035
15	STEM NUT	MALLEABLE
16	HANDWHEEL	C.I. A197

DIMENSIONS (mm)

SIZE	L	H	D	WEIGHT (Kg)
2"	146.0	420	165.1	40
2 1/2"	165.1	575.0	190.5	63
3"	177.8	590.0	209.5	70
4"	215.9	715.0	273.0	135
5"	254.0	830.0	330.2	250
6"	279.4	1080.0	355.6	345

* Note : Dimensions, design and materials are subject to change without notice. Approximate weights.

MAC EDITIONS - MMXXIII

