

\* Reference photo

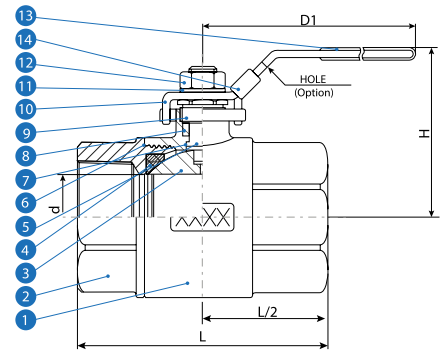
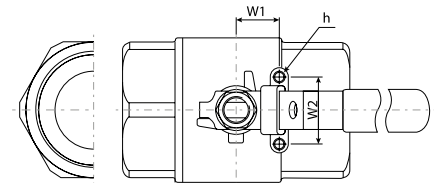


## DESIGN FEATURES:

- Pressure Rating: PN25
- Steam Rating: 150 PSI WSP
- Investment Cast Body & Cap
- Bottom-Loaded, Blow-Out-Proof Stem Easy Actuator Mounting
- Stainless Steel Handle With Vinyl Grip
- Locking System Optional
- Threaded End NPT ANSI/ASME B1.20.1
- Test standard: API 598

## MATERIAL LIST

|    | PART NAME     | MATERIAL          | QTY. |
|----|---------------|-------------------|------|
| 1  | BODY          | ASTM A351 Gr. CF8 | 1    |
| 2  | CAP           | ASTM A351 Gr. CF8 | 1    |
| 3  | BALL          | ASTM A351 Gr. CF8 | 1    |
| 4  | STEM          | ASTM A276 Gr. 304 | 1    |
| 5  | SEAT          | RPTFE             | 2    |
| 6  | GASKET        | PTFE              | 1    |
| 7  | THRUST WASHER | PTFE              | 1    |
| 8  | PACKING       | PTFE              | 1    |
| 9  | GLAND         | SS304             | 1    |
| 10 | HANDLE        | STAINLESS STEEL   | 1    |
| 11 | HANDLE WASHER | SS304             | 1    |
| 12 | HANDLE NUT    | SS304             | 1    |
| 13 | HANDLE SLEEVE | VINYL GRIP        | 1    |
| 14 | LOCKING PLATE | STAINLESS STEEL   | 1    |



Speed Logística y Servicios S.A.C. Importador y distribuidor autorizado de válvulas SUN para Perú y su exportación.

## DIMENSIONS (mm)

| SIZE   | d     | L     | D1  | H     | W2  | h        | CV Factor | WEIGHT (Kg) |
|--------|-------|-------|-----|-------|-----|----------|-----------|-------------|
| 1/4"   | 11.0  | 59.5  | 100 | 53.5  | 36  | M5XP0.8  | 6         | 0.207       |
| 3/8"   | 12.5  | 59.5  | 100 | 56.4  | 36  | M5XP0.8  | 12        | 0.205       |
| 1/2"   | 15.0  | 64.0  | 102 | 55.0  | 36  | M5XP0.8  | 19        | 0.231       |
| 3/4"   | 20.0  | 77.0  | 126 | 66.0  | 36  | M5XP0.8  | 37        | 0.442       |
| 1"     | 25.0  | 90.8  | 126 | 71.0  | 36  | M5XP0.8  | 64        | 0.597       |
| 1 1/4" | 32.0  | 98.3  | 152 | 89.0  | 50  | M6XP1.0  | 103       | 1.061       |
| 1 1/2" | 38.0  | 117.5 | 152 | 92.0  | 50  | M6XP1.0  | 143       | 1.500       |
| 2"     | 50.8  | 136.0 | 190 | 107.0 | 50  | M6XP1.0  | 360       | 2.698       |
| 2 1/2" | 65.0  | 165.0 | 190 | 119.0 | 70  | M8XP1.25 | 440       | 4.757       |
| 3"     | 80.0  | 193.5 | 300 | 131.0 | 102 | M10XP1.5 | 520       | 7.391       |
| 4"     | 100.0 | 216.0 | 380 | 171.0 | 102 | M10XP1.5 | 650       | 15.500      |

\* Note : Dimensions, design and materials are subject to change without notice.

MAC - MMXXI