

## DESIGN FEATURES:

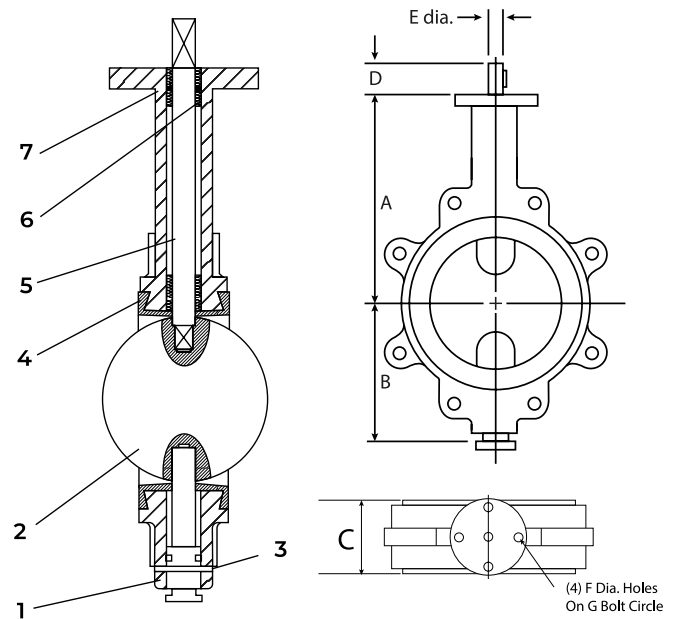
Design and manufacture: MSS SP-67  
 Shaft square type  
 Doble Shaft  
 Lever or gear box operation  
 Maximum temperature operation:  
 RPTFE -20°C (-4°F) to 150°C (302°F)  
 Lug type mounting between ANSI class 150  
 Test standard: API 598

\* Reference photo

## MATERIAL LIST

	PART NAME	MATERIAL
1	BODY	ASTM A351 Gr. CF8M
2	DISC	ASTM A351 Gr. CF8M
3	PIN	STAINLESS STEEL
4	SEAT	RPTFE
5	STEM	STAINLESS STEEL
6	BUSHING	PTFE
7	O-RING	BUNA-N

Speed Logística y Servicios S.A.C. Importador y distribuidor autorizado de válvulas SUN en territorio latinoamericano.



## DIMENSIONS (mm)

SIZE	A	B	C	D	E	F	G	N° HOLES ANSI	WEIGHT LEVER (Kg)	WEIGHT GEAR BOX (Kg)
2"	162	76	45	31.8	12.7	6.7	57.2	4	5	9
2 1/2"	175	89	48	31.8	12.7	6.7	57.2	4	6	11
3"	181	95	49	31.8	12.7	6.7	57.2	4	6.5	11.5
4"	200	114	55	31.8	15.9	10.3	69.8	8	9	13
5"	213	127	58	31.8	19.0	10.3	69.8	8	10.5	14.5
6"	225	140	59	31.8	19.0	10.3	69.8	8	12.5	16
8"	260	177	64	44.4	22.2	14.3	88.9	8	18.5	27
10"	292	203	70	44.4	28.6	14.3	88.9	12	29.5	38
12"	337	242	80	44.4	31.8	14.3	107.95	12	40	54

\* Note : Dimensions, design and materials are subject to change without notice.

MAC - MMXXI